

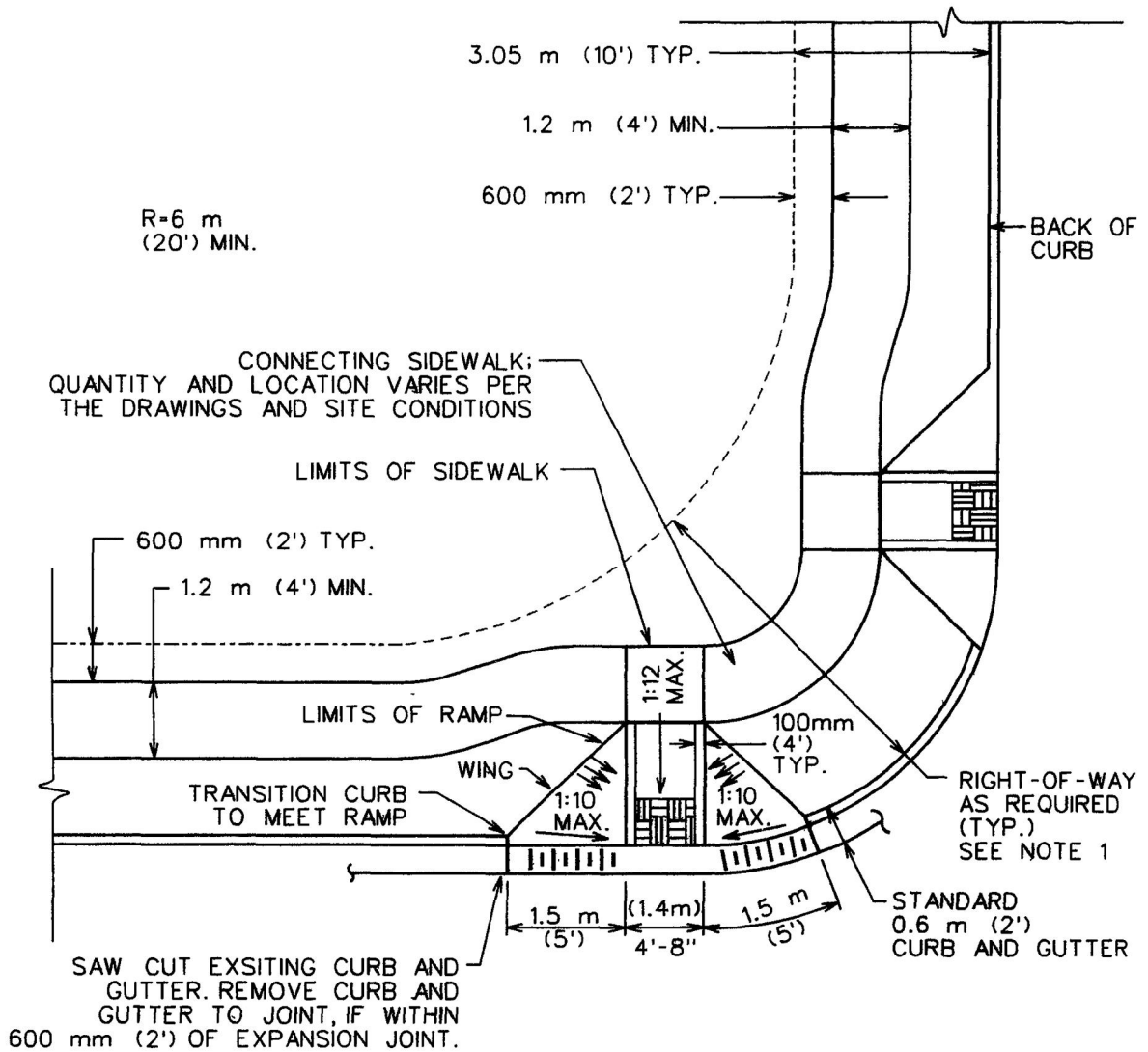
CITY OF AUSTIN
DEPARTMENT OF PUBLIC WORKS

TYPE 1 CURB RAMPS-FULL INTERSECTION

Bill Gardner 3/13/06
ADOPTED

THE ARCHITECT/ENGINEER ASSUMES
RESPONSIBILITY FOR APPROPRIATE USE
OF THIS STANDARD.

STANDARD NO.
432S-3
1 OF 3



TYPICAL PLAN

CITY OF AUSTIN
DEPARTMENT OF PUBLIC WORKS

TYPE 1 CURB RAMPS-FULL INTERSECTION

Bill Jordan 3/13/06
ADOPTED

THE ARCHITECT/ENGINEER ASSUMES
RESPONSIBILITY FOR APPROPRIATE USE
OF THIS STANDARD.

STANDARD NO.
432S-3
2 OF 3

GENERAL NOTES:

1. THIS STANDARD IS APPLICABLE FOR RAMP CONSTRUCTION WITHIN RIGHT-OF-WAY OR EASEMENT ONLY.
2. THIS STANDARD REPRESENTS A TYPICAL CURB RAMP DESIGN FOR A NEWLY CONSTRUCTED INTERSECTION WITH A 6 m (20') RADIUS. LARGER RADIUS, STREET GRADES, LIMITED SIGHT DISTANCES, STREET CLASSIFICATION, SIGNALIZATION AND OTHER FACTORS MAY REQUIRE THE ENGINEER OR DESIGNATED REPRESENTATIVE TO MODIFY THIS STANDARD. SUFFICIENT RIGHT-OF-WAY SHALL BE DEDICATED SUCH THAT THE ENTIRE CURB RAMP, INCLUDING LANDING, AND THE INTER-CONNECTING SIDEWALK ARE CONTAINED WITHIN THE RIGHT-OF-WAY.
3. THE CURB, GUTTER AND RAMP SYSTEM SHALL BE CONFIGURED TO MAINTAIN ALL RUNOFF FROM A 25 YEAR FREQUENCY STORM WITHIN THE RIGHT-OF-WAY (DRAINAGE CRITERIA MANUAL SECTION 1.2.2.B). WHEN THERE IS AN ELEVATION DIFFERENCE BETWEEN THE BOTTOM OF RAMPS (I.E. ELEVATION AT THE GUTTER) WITHIN A QUADRANT OF AN INTERSECTION, THE LOWER ELEVATION RAMP SHALL BE CONSTRUCTED WITH A POSITIVE RAMP SLOPE OF 1:12 IN ACCORDANCE WITH STANDARDS 432S-5, 432S-5A AND 432S-5B.
4. STANDARD ASSIGNMENT OF SIDEWALKS IS 600 mm (2') OFF PROPERTY LINE, EXCEPT AS INDICATED ON THE DRAWINGS.
5. ALTHOUGH CURB RAMPS MAY BE PLACED WITHIN THE RADIUS, PLACING THE RAMP OUTSIDE OF THE RADIUS WILL ALLOW FOR THE GREATEST DIFFERENCE IN ELEVATION BETWEEN THE RAMPS.
6. WINGS ARE REQUIRED ONLY IF PEDESTRIANS WOULD NORMALLY CROSS THE RAMP.
7. LANDINGS SHALL BE FLAT AND MATCH PT, PC OR TOP OF CURB ELEVATION.
8. CURB RAMPS WILL BE PERPENDICULAR TO ROADWAY CENTERLINES AND SHALL ALIGN WITH EACH OTHER.
9. GRADES ON SIDEWALKS LEADING TO OR FROM THE RAMPS SHALL FOLLOW CURB GRADES.
10. THE SLOPE OF THE SIDEWALK WHICH IS LOCATED WITHIN THE RADIUS AND CONNECTS TWO CURB RAMPS SHALL NOT EXCEED 1:20. THE DEVELOPER, AS PART OF THE CURB RAMP INSTALLATION, SHALL CONSTRUCT THIS CONNECTING SIDEWALK.
11. STRIPING AND SIGNAGE NOT REQUIRED IN ALL INSTANCES. STOP BARS, IF REQUIRED, SHALL BE LOCATED 1.2 m (4') FROM CROSSWALK.
12. IF A MEDIAN EXTENDS INTO THE CROSSWALK AREA, AN OPENING SHALL BE PROVIDED IN THE MEDIAN THE SAME WIDTH AS THE CURB RAMP.
13. CURB INLETS SHALL NOT BE LOCATED WITHIN 3.0 m (10') OF A CURB RAMP.
14. GUTTER SHALL PROVIDE SMOOTH TRANSITION TO RAMPS.

CITY OF AUSTIN
DEPARTMENT OF PUBLIC WORKS

TYPE 1 CURB RAMPS-FULL INTERSECTION

THE ARCHITECT/ENGINEER ASSUMES
RESPONSIBILITY FOR APPROPRIATE USE
OF THIS STANDARD.

STANDARD NO.

432S-3

3 OF 3

Bill Gardner 3/13/06
ADOPTED